



Mornington Road, North Chingford, E4 7DT

PCM
£2,800 PCM

 Coultons

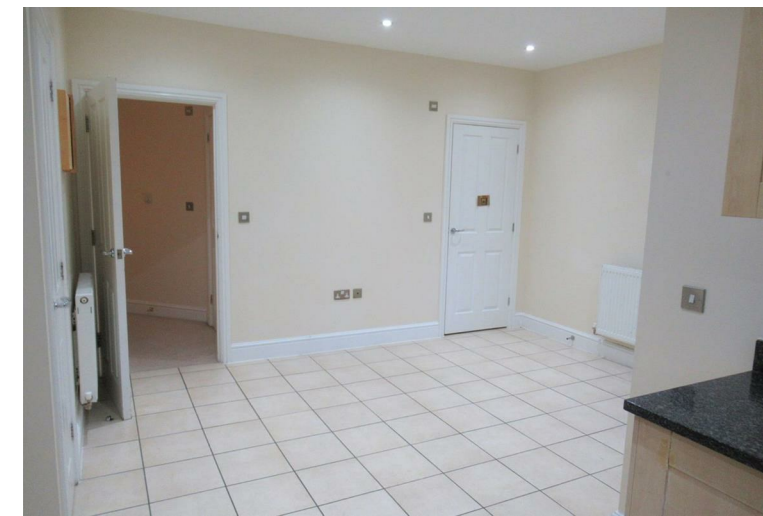
PROPERTY SUMMARY

We are pleased to offer this delightful semi-detached house on Mornington Road benefitting from a perfect blend of comfort and modern living. With four spacious bedrooms, storage and a small utility area tucked away off the kitchen, this property is ideal for families seeking ample space to grow and thrive.

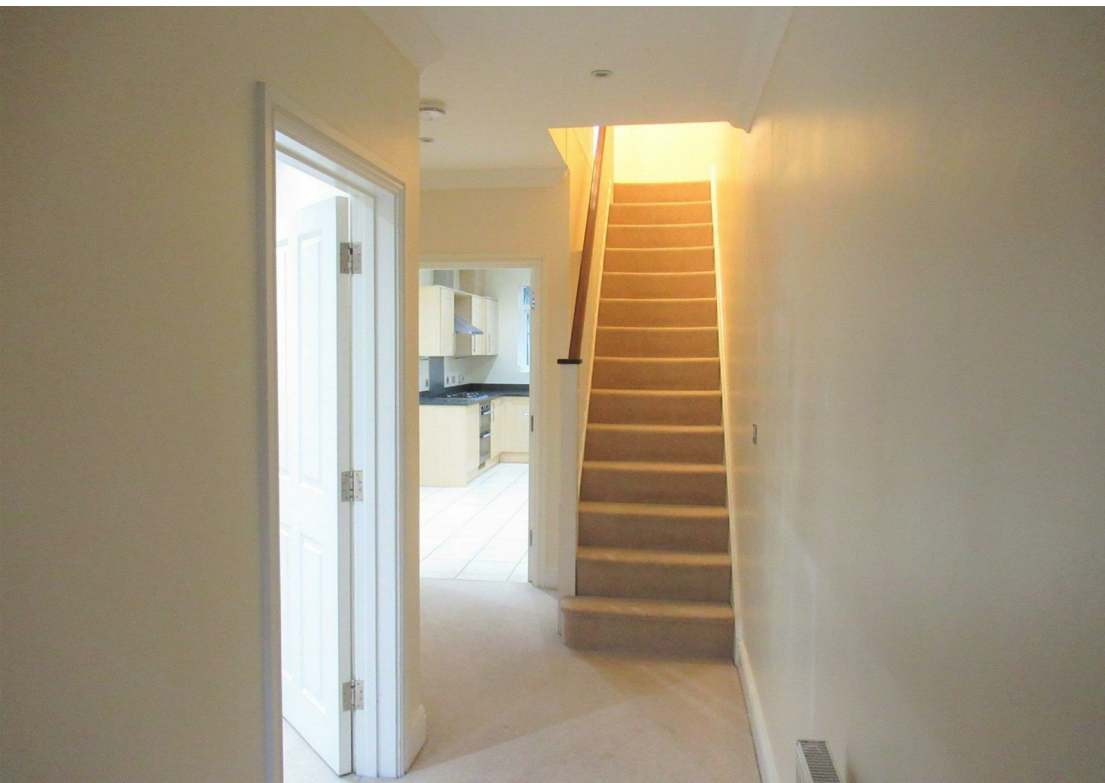
The house boasts three well-appointed bathrooms, which is a significant advantage for busy households, and offers generous living areas, allowing for both relaxation and entertaining.

Close to local amenities, transport links, parks, as well as schools being just a stone's throw away, makes this an excellent choice for families and professionals alike.

Available from April



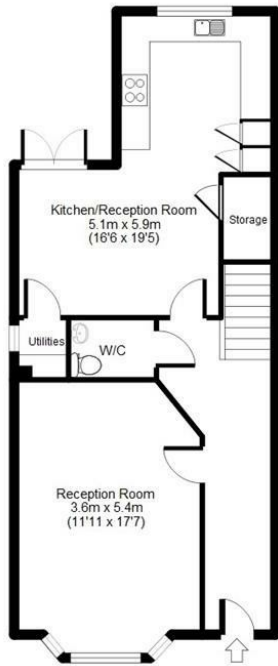




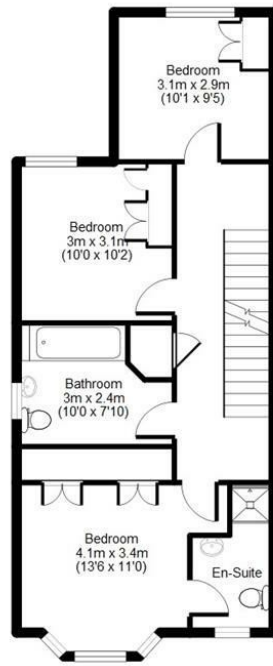


Mornington Road, Chingford, E4

APPROX GROSS INTERNAL FLOOR AREA: 1476 sq. ft / 137 sq. m



Ground Floor



First Floor



Second Floor

For identification purposes only
Measurements are approx and not to scale

LOCAL AUTHORITY
Waltham Forest London Borough

TENURE

COUNCIL TAX BAND
F

VIEWINGS
By prior appointment only

Energy Efficiency Rating		Current	Potential
Very energy efficient - lower running costs			
(92 plus)	A		
(81-91)	B		
(69-80)	C		
(55-68)	D		
(39-54)	E		
(21-38)	F		
(1-20)	G		
Not energy efficient - higher running costs			
England & Wales		EU Directive 2002/91/EC	

Agents Note: Whilst every care has been taken to prepare these particulars, they are for guidance purposes only. All measurements are approximate and are for general guidance purposes only and whilst every care has been taken to ensure their accuracy, they should not be relied upon and potential buyers/tenants are advised to recheck the measurements



OFFICE ADDRESS

26 Station Road
North Chingford
London
E4 7BE

020 8090 0860
lettings@coultons.co.uk
www.coultons.co.uk

OFFICE ADDRESS

425a Lordship Lane
Wood Green
London
N22 5DH

020 3869 8989
lettings@coultons.co.uk
www.coultons.co.uk